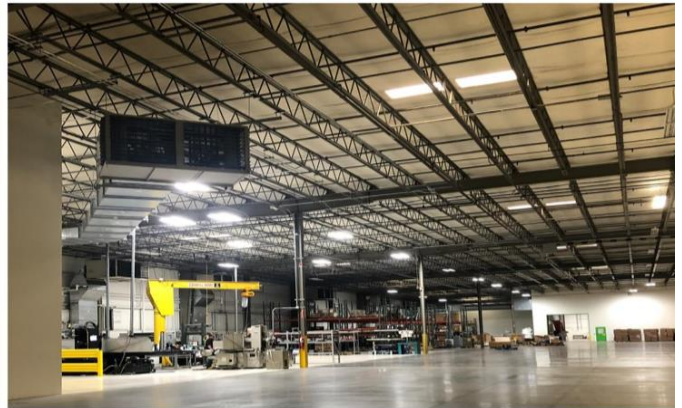


**iMFLUX** is in the process of upgrading lighting throughout the facility. Existing fixtures are fluorescent and will now be low wattage, high lumen LED fixtures. This includes 168 high bay/warehouse style fixtures and 363 office style fixtures. This investment will result in a monthly savings of 35,000 kWh. This monthly electrical bill savings in addition to the HVAC and maintenance savings will result in a monetary savings of nearly \$5000 per month! Not only does this investment make sense by the numbers, it reduces our carbon footprint and provides better lighting for our employees throughout the facility. **It's a Win-Win-Win!**



## Check out these upcoming webinars!

Click [here](#) to RSVP for any of these webinars!

SPONSORED BY: **PLASTICS** ASSOCIATION

**EDITORIAL-DRIVEN LIVESTREAMING** July 28, 2020 • 2PM ET

**INNOVATIONS IN SUSTAINABILITY TO GROW YOUR BUSINESS & INFLUENCE**

**Mary Wagner**  
Senior Director, Sustainability & Materials, Plastics Industry Association

Webinar Featuring: **Mary Wagner**  
July 28th, 2020 2:00 PM ET

**(((sustainable)))**  
Plastics

**ASK THE EXPERT**  
Livestream Series

Ask the Expert Circular Economy Series: **iMFLUX**  
Webinar Featuring **Gene Altonen**  
July 31st, 2020 10:00 AM ET / 4:00 PM CET

Click [here](#) to visit our Education page and "Education on Demand"

Plastics News  
**PLASTICS CAPS & CLOSURES 2020**

Webinar: Featuring **Gene Altonen**  
September 25th  
2:00 PM - 3:00 PM